

## APPENDICES FOR THE STATE OF THE AMAZON NO. 20

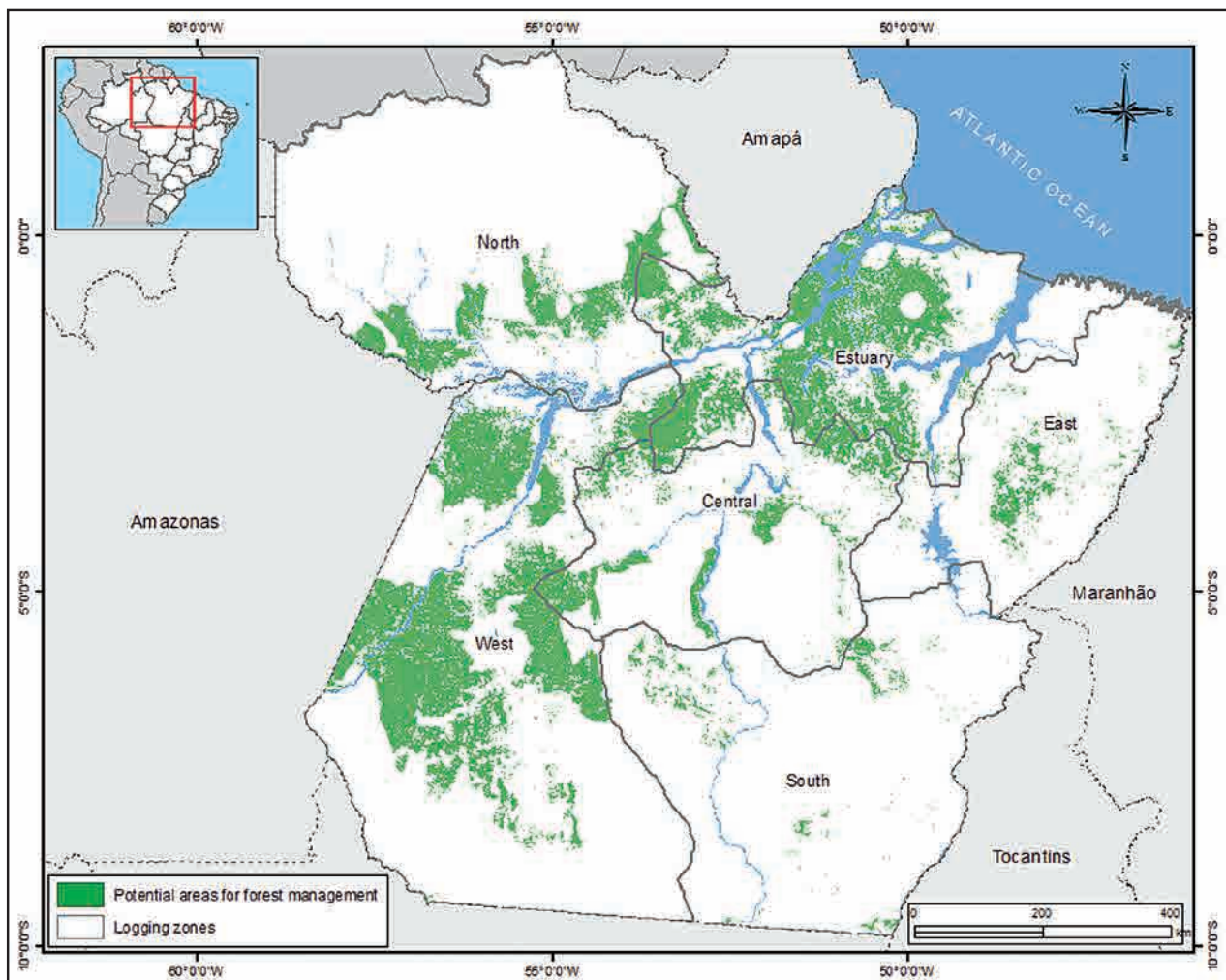
### Supply and demand of areas for forest management in the Pará State

Appendix 1. Method for calculating potential net forest supply in the Pará State, 2010

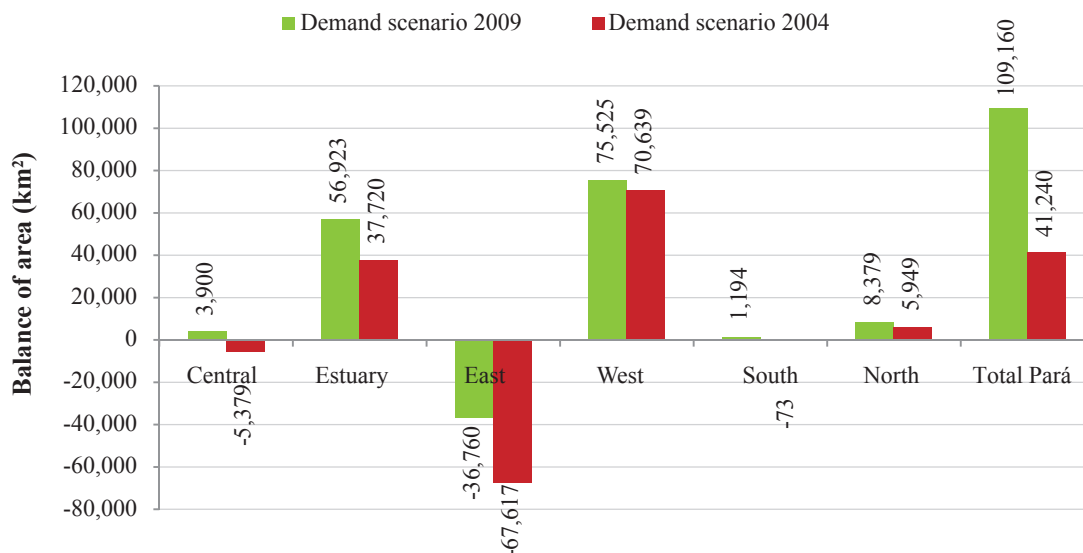
Areas considered for exclusion	% of State area
<b>State Area = 1,248,000 km<sup>2</sup></b>	<b>100</b>
(-) Full Protection UCs, Indigenous Lands, Military Areas and Trombetas Flota*	38.6
(-) Deforestation consolidated (up to 2010), non-forest areas and water	23.2
(-) Urban perimeter of municipal seats (radius of 20 km)	1.2
(-) Heat spots (radius of 2 km)	18.7
(-) Areas with altitude higher than 400 meters	0.8
(-) APPs for hydrography (100 meters for major rivers and 30 meters for smaller drainages)	0.7
<b>Net Forest = 208,145 km<sup>2</sup></b>	<b>16.8</b>

\* The zoning called for in the Management Plans for the Paru, Trombetas and Faro Flotas already defines the area destined for forestry activity. The Trombetas Flota was excluded from the calculation because it does not provided for forestry activity areas in its zoning

Appendix 2. Areas with potential for forest management in the Pará State in 2009



**Appendix 3. Scenarios for forest management by timber zone in Pará in 2004 and 2009**



**Appendix 4. Supply and demand projections for native and reforestation timber in Pará from 2011 to 2014**

Legal sources of timber for the Pará forest sector	2011		2012		2013		2014	
	Area (ha)	Log Volume (m³)	Area (ha)	Log Volume (m³)	Area (ha)	Log Volume (m³)	Area (ha)	Log Volume (m³)
(A) Federal concessions	350,690 (i) 11,690	262,995	962,362 (i) 32,079	670,776	2,063,825 (i) 68,794	1,405,085	2,335,201 (i) 77,840	1,586,002
(B) State Concessions	-	-	694,300 (i) 23,143	578,583	784,300 (i) 26,143	653,583	984,300 (i) 32,810	786,917
(C) Autefis for native forest	209,062	4,181,236	210,542	4,210,841	210,542	4,210,841	210,542	4,210,841
(D) Autefis for reforestation	2,301	207,048	2,396	211,665	2,444	219,978	2,493	224,378
<b>(F) Total supply (A+B+C+D)</b>	<b>223,052</b>	<b>4.651.279</b>	<b>268,160</b>	<b>5,675,866</b>	<b>307,924</b>	<b>6,489,488</b>	<b>323,685</b>	<b>6,808,138</b>
<b>(E) Projection of demand</b>	<b>330,000</b>	<b>6,600,000</b>	<b>330,000</b>	<b>6,600,000</b>	<b>330,000</b>	<b>6,600,000</b>	<b>330,000</b>	<b>6,600,000</b>
<i>Balance (F-E)</i>	<i>(106,948)</i>	<i>(1,948,721)</i>	<i>(61,840)</i>	<i>(924,134)</i>	<i>(22,076)</i>	<i>(110,512)</i>	<i>(6,315)</i>	<i>208,138</i>

(i) Total area under forest concession

## Appendix 5. Areas with potential for creation of new Protected Areas in Pará

